



AX SERIES

**AX300 for Freight &
Rolling Stock**



Trainweigh - Rail Weighing Specialists

Weighbridge Services Ltd is a family run business based in Sheffield, UK. With over 40 years experience of designing, building and installing both road and rail weighing equipment, our team of engineers cover almost every aspect of the weighing industry.

Our Trainweigh brand of products, offered solely by Weighbridge Services Ltd, offer a vast range of rail weighing solutions. Over the past 10 years our product range has benefited profoundly from increased R & D budgets, a stronger supply chain and the increased expertise of our workforce by bringing in experienced employees from other parts of the rail weighing industry.

The Trainweigh range is designed for application into any rail infrastructure from factory installed weighers and testing systems to out-in-the-field weighing and data collection services.

We are now positioned as one of the leading train weighing specialists and can supply a vast range of products worldwide, both off-the-shelf and bespoke.

We look forward to hopefully working with yourselves.

Regards,

The Trainweigh Department

OUR AFFILIATIONS





AX SERIES

AX300 SERIES
DYNAMIC WEIGHING SYSTEM

DYNAMIC WEIGHING SYSTEM

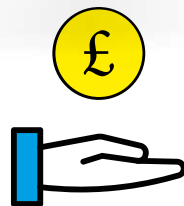
The AX300 is a mobile train weighing scale which is primarily used for weighing trains in dynamic motion to weigh each wheel or axle in succession until the set has completely passed the unit. On completion a weight ticket is printed showing the individual wheel weights, axles, wagon and total train weight. Alarms can be set to show balance issues, as well as other areas of major safety concern, configurable through the weight terminal software.

A PC upgrade package is also available which enables the operator to produce a rail weight loading ticket which is suitable for the train to be sent onto an infrastructure.

The software package enables the operator full control of the weights including stock movement. Reports can be generated instantly.

Benefits of the AX300 for Freight:

- Increase productivity
- No rail track downtime for installation
- Ensure wagons are loaded to capacity
- Identify carry back cargo.
- Ensure balance of loading is correct
- Check for broken suspension
- Produce rail weight loading tickets for infrastructure travel
- Reduce the risk of derailment
- No costly civil alterations
- Fits most rail profiles
- Fits all standard rail gauges
- Easy to use
- Easy to install, 10-15mins
- Pre-calibrated



Regular weighing can provide vital, readily available information on various components making maintenance and testing more cost effective for any type of rail depot.

WHY WEIGH A TRAIN?

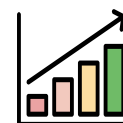
Weighing up the benefits



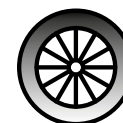
IMPROVE COMPONENT LIFESPAN



CONFORM TO REQUIRED DIN/EN STANDARDS



INCREASE EFFICIENCY



REDUCE WHEEL WEAR



REDUCE MAINTENANCE INTERVALS

Regular weighing reduces the risk of safety issues by immediately highlighting areas of concern when using the AX Series' fail-safe software system.

Our built-in safety systems notify the operator the instant that any discrepancies, based on your pre-set requirements, are logged.

Multiple plug-ins can be activated to provide a various amount of warning systems to cover many safety concerns faced by rail companies.



WHAT ARE THE SAFETY BENEFITS?



IDENTIFY BROKEN SUSPENSION



REDUCE RISK OF DERAILMENT



REDUCE BRAKE WEAR



INSTANT ALERTS WHEN ISSUES ARE FOUND IN ANY SPECIFIED AREAS



The AX300 for Freight is available in 2 versions:



AX300 STANDARD SYSTEM

AX300 30,000kg per axle (15,000kg per wheel) which weigh with 10kg increments

AX300 HIGH CAPACITY SYSTEM

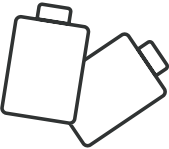
AX300HC 40,000kg per axle (20,000kg per wheel) which weigh with 20kg increments



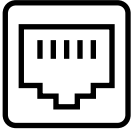
EACH KIT INCLUDES:

- 1 x AX Series bases (2 wheel weighing)
- 1 x Portable, battery operated weight terminal with integrated thermal printer, ethernet port and USB data port.
- 1 x Portable junction box connection units
- 2 x 7m armoured cable
- 1 x 15m armoured cable
- 1 x 7m Weight Terminal Armoured cable

The AX300 for Freight comes with the following weight terminal as standard.



The unit has built in rechargeable batteries for up to 10 hours use between charges.



IP controlled Ethernet connection built into the terminal

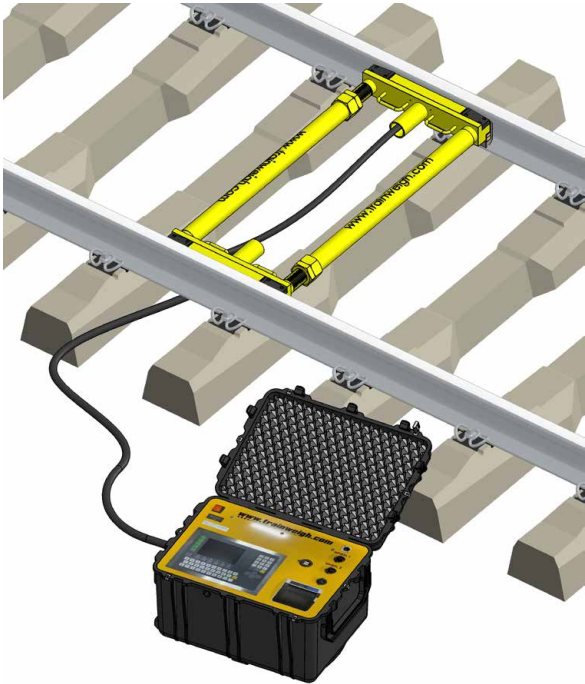


Thermal tally roll printer built into the terminal



IP67

IP67 Protected Enclosure



AX SERIES SOFTWARE PACKAGE

The screenshot displays the Trainweigh software interface, which is a customisable stock control software package. It features a sign-in screen, a train weighing control panel, and a load information table.

Sign In Screen: Includes fields for User Name and Password, and a Sign In button.

Train Weighing Control Panel: Shows a dropdown menu for the train (AX400), a grid of buttons for individual axle weights (1-12), and a central diagram of a train with axle weights (12000, 10004, 8000, 4000, 39.98) and a Train Total of 20008 Kg. Buttons for Activate, Sleep All, Start Train, Weigh Wagon, Finish Train, and Zero are visible.

Load Information Table: A table with columns for Train Number, Train, Train Destination, and Number. It lists various train numbers and destinations, such as 403, 384, 353, 392, 385, 384, 383, 382, 381, 380, 379, 378, 377, 376, 375, 374, 373, 372, 371, 366, 367, 366, 364, 363, 362, 361, 359.

A customisable stock control software package to give flexibility with an easy to use platform.

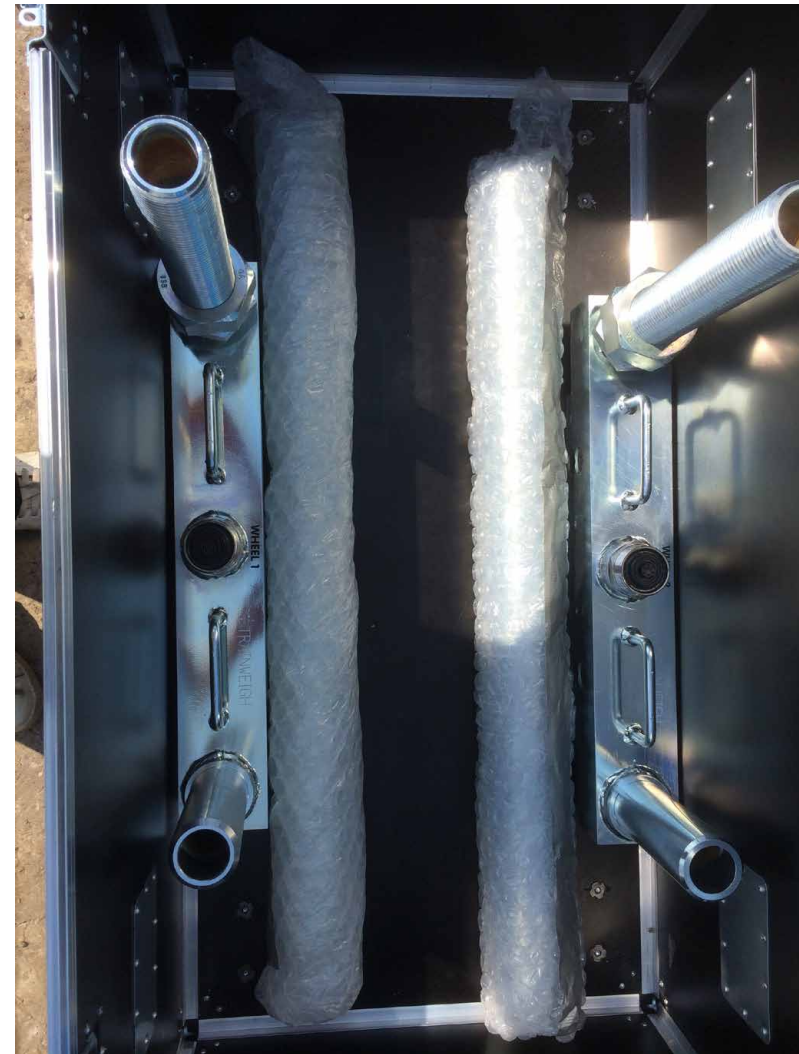
The customisable software can record and provide tickets including loaded weights, tare weights, gross weights, material weights and much more using the built in software.

All active wheel weights from the AX300 are individually displayed. Customisable values are used to show percentage of error tolerances as set out in the vehicle safety guidelines.

- Support for stock control management
- Database entry and retrieval for easy record keeping
- Full reporting system with printed and digital data output
- Remote compatibility
- Easy to use
- Reliable
- Flexible and customisable drag and drop platform

AX SERIES TECHNICAL INFORMATION

AX Series Version	High capacity Specification
AX Series Body Lengths	500mm or 600mm
Live and usable weighing area	374mm
Material	Tool Grade
AX Series protection	Zinc plated <i>Please note that zinc plating is not a cosmetic finish and is used for rust protection</i>
Rail Gauge	1 set of spacer poles provided
Rail Adaptors	1 set of rail adaptors provided
Number of wheel weighing units	2
Available Configurations	2 wheels
Working Temperature Range	-40 to +80 °C
Protection Classification	IP67
Power	Rechargeable 24v batteries built into the system.
Capacity per wheel	Standard Version: 15,000kg High Capacity (HC) Version: 20,000kg
Safe Overload Protection	150%
Increments	Standard Version: 10kg High Capacity (HC) Version: 20kg
Accuracy	1-3%, best accuracy is achievable if the scale is used in ideal conditions. (Example: straight and level rail track, either side of the scales location)
AX Series Calibration	ISO9002:2015





DB

66 150

DB

Warentransport

PROUD TO HAVE WORKED WITH:



HEIDELBERGCEMENT



aselsan



Freightliner

STADLER



SIEMENS



BANE NOR



KERETA API
PT.KERETA API INDONESIA (PERSERO)





WEIGHBRIDGE SERVICES LTD

The Chapel, Carrwell Lane, Sheffield, S6 1NR, United Kingdom

Tel: +44 (0)114 321 63 64

Email: trainweigh@weighbridgeservices.com